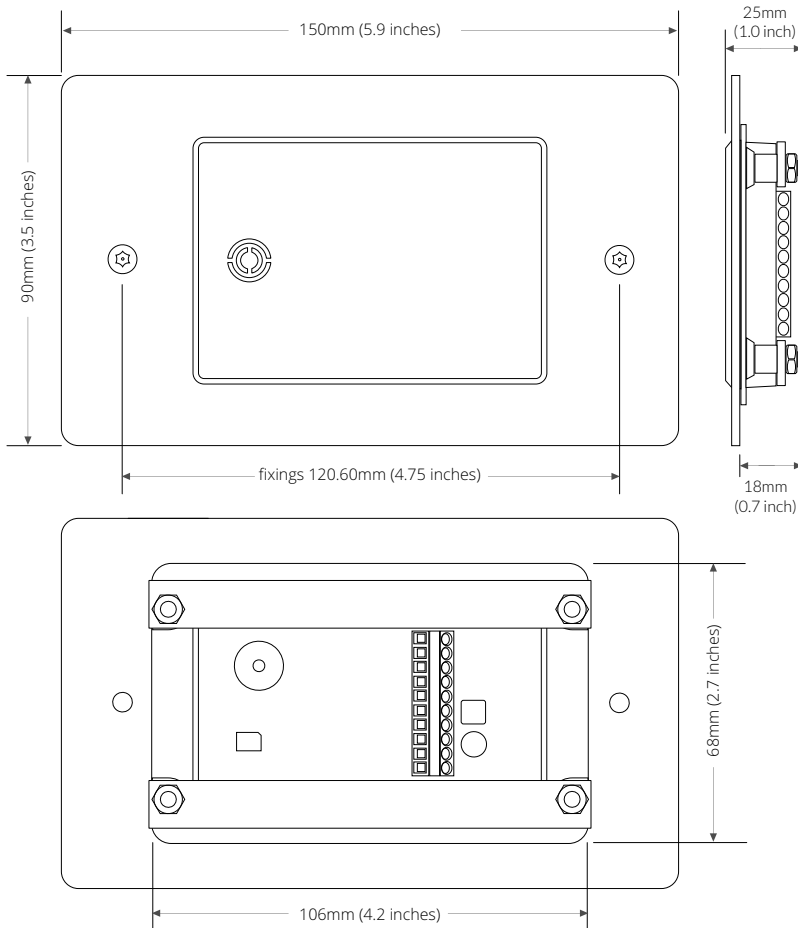


Mechanical	
Dimensions	150 x 90 x 25 mm (5.9 x 3.5 x 1.0 inches)
Housing	Moulded polycarbonate / stainless steel
Mounting	Suitable for flush mounting over a double gang UK back box
Fixing	M3.5 x 20mm Security Screws (supplied)
Environmental	
Operating temp'	-35°C to +66°C
Humidity	85±5% at 30±2°C (86±3°F)
Ingress	IP67 with EPDM wall gasket for mounting externally
Electrical	
Voltage	see table below
Current	see table below
Data Voltage	Rest >4Vdc / Active <1Vdc
Data output	see table below
Indication	1 RGB LED
Sounder	Integral speaker
Termination	Screw - see DATASHEET: TERMINAL CONNECTIONS



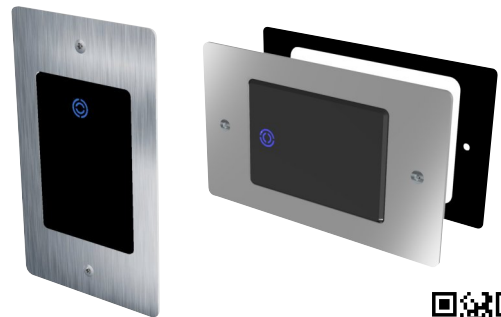
base model No.	frequency	current mA	voltage Vdc	terminal connection	technology	RFID card	keypad output	optical tamper	Wiegand Clock&Data	OSDP	CE WEEE RoHS	FCC	UL294	INDIA BIS/WPC	CHINA SRRC
RX5M60	13.56 MHz 125 kHz	75	10 - 16	B	LEGIC® + HID® Prox	PC06			•	•	•				
RX5M90	13.56 MHz 125 kHz	75	10 - 16	B	MIFARE®/DESFire® + HID® Prox	PC09			•	•	•				



Key features

- Anti-Ligature
- UK design and manufacture
- TM Panel Mount reader
- Impact resistant
- Black textured finish / Brushed stainless steel
- Flush profile
- RGB LED
- Fully encapsulated electronics
- Range of output formats
- 5 year limited warranty
- Horizontal or Vertical mounting

• PLEASE CALL +44 (0) 1495 751 992 to discuss your custom configuration or LEGIC® requirements



'MIFARE', 'MIFARE Classic' and 'MIFARE DESFire EV2' are trademarks of NXP B.V.