



Scan the QR code or link to the address below to find a list of datasheets to all products and other support information.

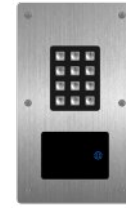
<https://www.tm-readers.com/downloads.htm>



These notes provide a general guidance for connecting and mounting the RXseries® of reader model(s) shown to the right.

Readers should only be installed by a qualified installer.

Mounting readers on (or near) metal may impair the read range of the unit.



RX5SK

The RX5SK is a Third Millennium styled flush-mounted Ligature Resistant reader, with keypad PIN entry function. The unit is a multi-technology installation suitable to interface with all standard access control systems, and offers impact resistant construction with a high degree of protection against vandalism and malicious attack.

CONNECTIONS / PIN OUT

OSDP® readers

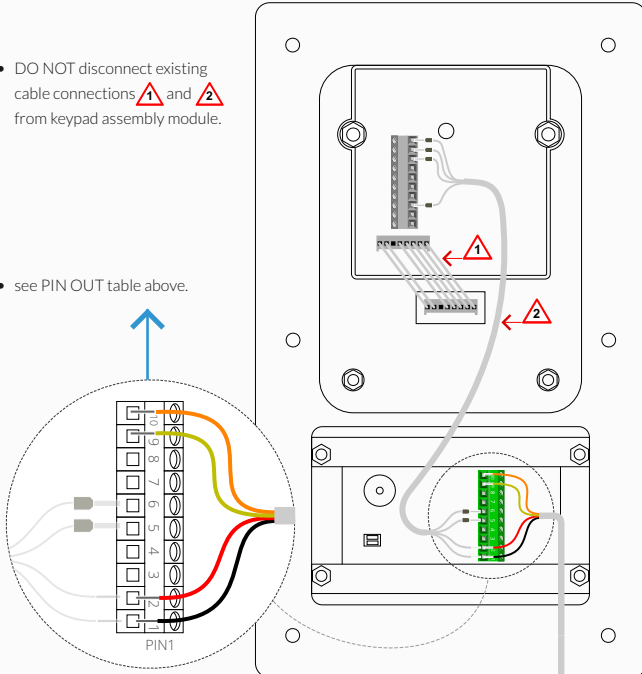
RX5SK reverse face



10	RS485 +	RS-485 Bus
9	RS485 -	RS-485 Bus
8	not used	-
7	not used	-
6	not used	-
5	not used	-
4	not used	-
3	not used	-
2	+Vdc	supply voltage (+10Vdc to +16Vdc)
1	OV	supply voltage ground

• DO NOT disconnect existing cable connections 1 and 2 from keypad assembly module.

• see PIN OUT table above.



• Make cable connection A from your OSDP™ access control panel, to terminal PIN-OUTs as shown.

NOTE:

• Colour of wires are for representation only, and may differ from the cable you use.



BELDEN 9502 cable (or equivalent minimum 24 AWG) is recommended for use with OSDP readers



OSDP® reader DEFAULT SETTINGS



boud rate
9600

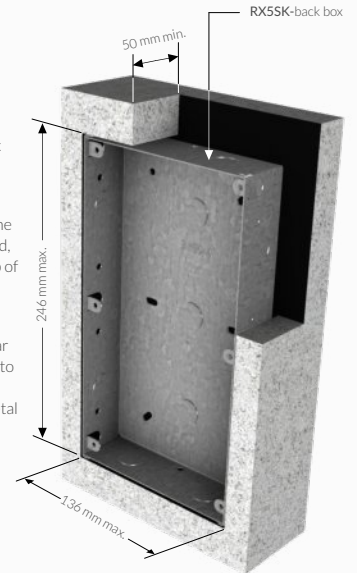
address
0

It is recommended that a 120 Ω resistor should be fitted between the data lines at each end of the RX485 Bus

INSTALLATION

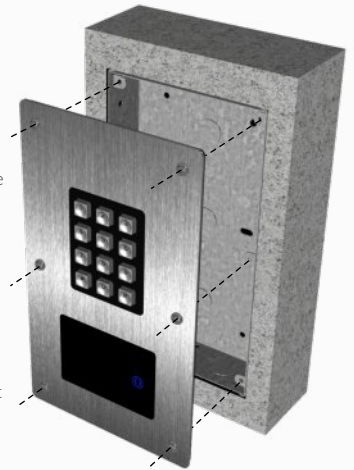
1

- To dimensions shown, make clean-cut and chase, or form suitable recess in wall, and securely fix RX5SK- back box using suitable hardware, having a diameter no greater than 4mm.
- Care should be taken not to exceed the opening dimensions given. When fixed, the reader faceplate offers a cover lip of approximately 6mm.
- NOTE: When feeding cabling through circular knock-out panels, it is recommended to fit rubber grommets to the holes, to protect the cable from damage by metal edges.
- Install and connect cabling in accordance with good practice, electrical guidelines and statutory regulations.



2

- Before making connections, ensure the reader technology and access control panel are compatible.
- When the back box is secured, make wire connections to the reader assembly as shown in the 'CONNECTION' panel to the left.
- Make all relevant connections to your control panel.
- Ensure you arrange the connection cables such not to impair or prevent the reader assembly being properly secured to the back box.



3

- As a final check, before fixing the RX5SK reader assembly, confirm you have wired the PIN-OUT connections correctly.
- Offer up the reader module and securely fix the panel using the security screws (supplied).
- Run activation / performance test.



Standard installation of RX5SK reader assembly.